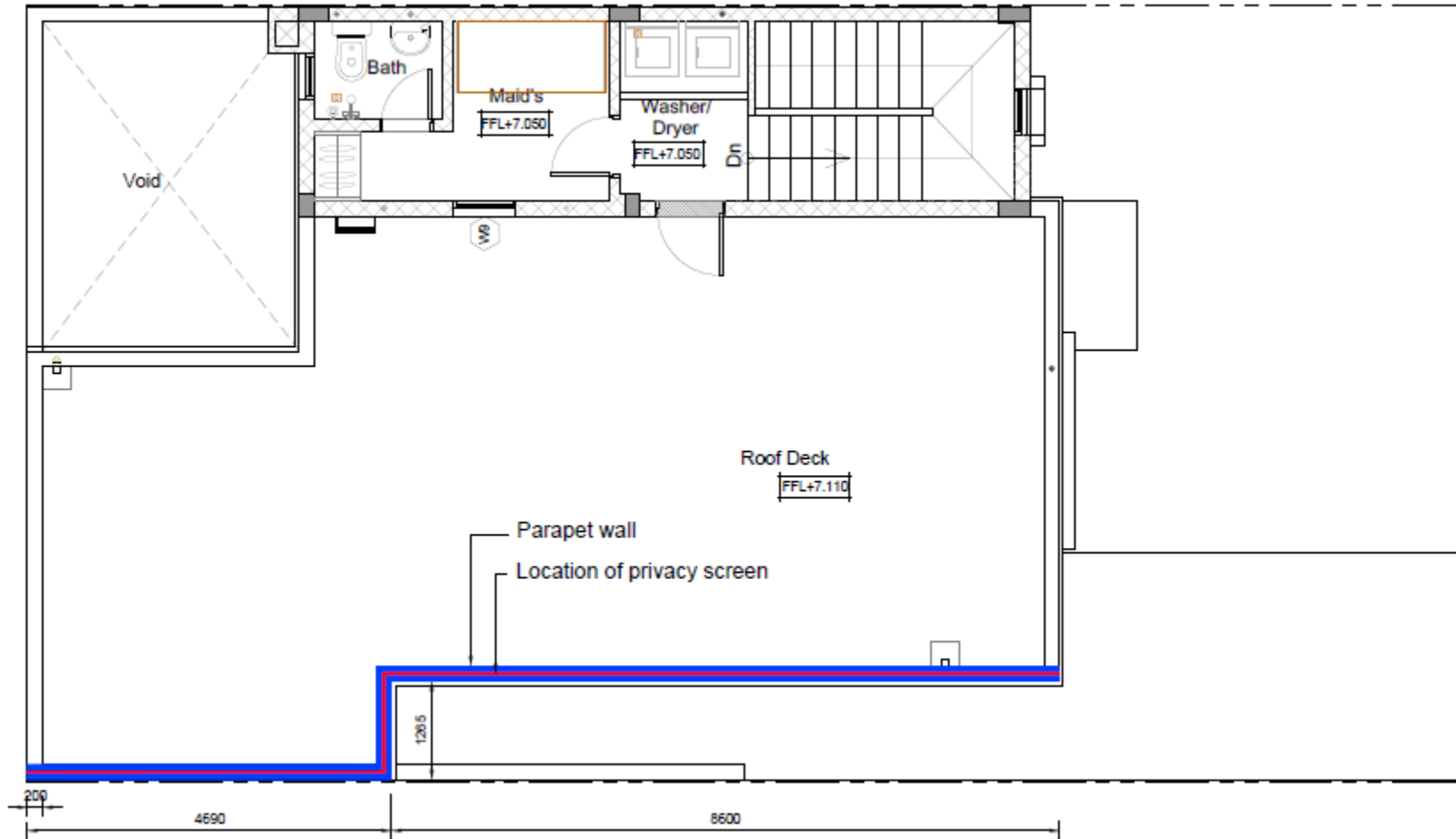
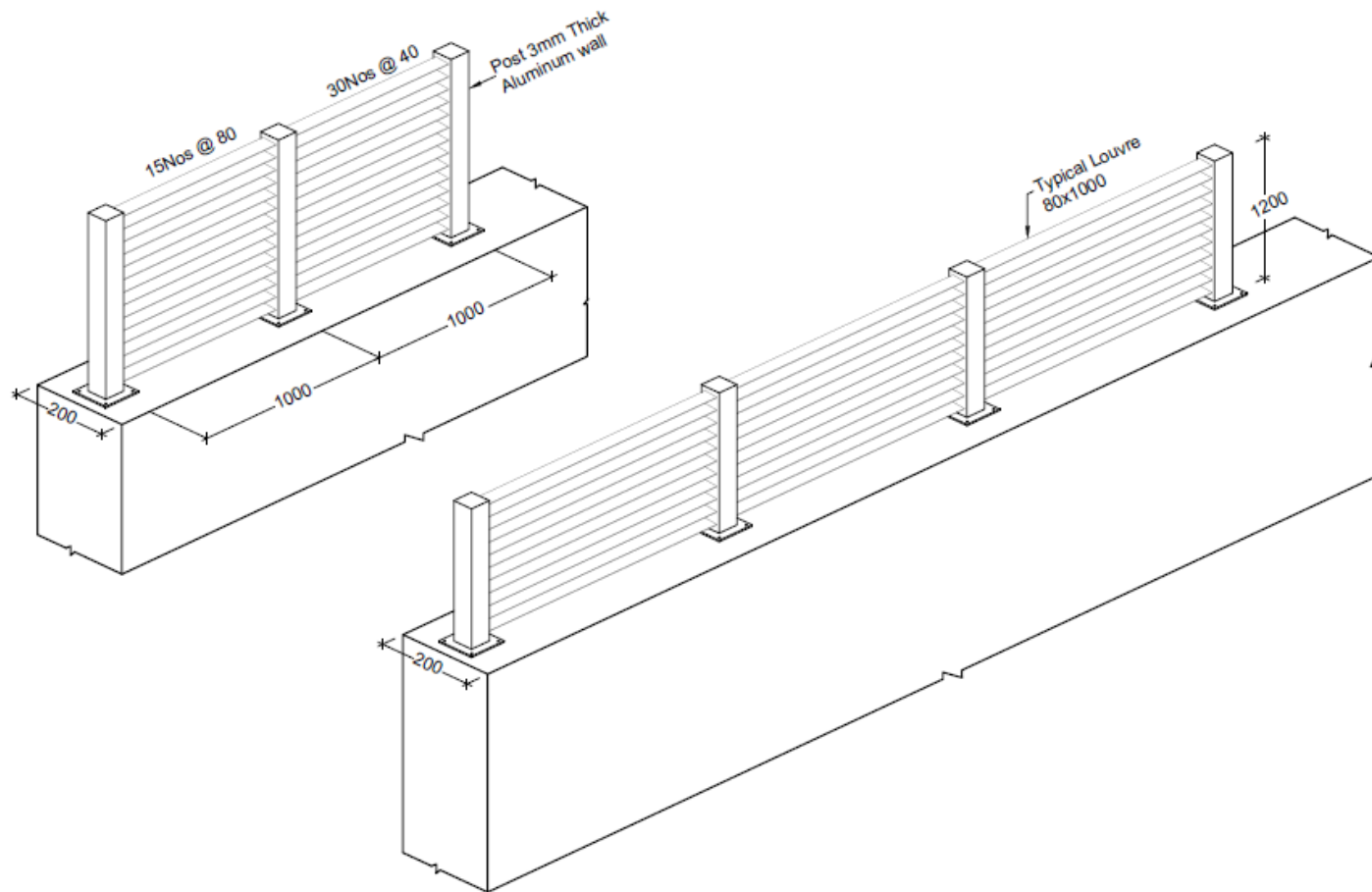


A. Parapet Wall Privacy Screen Location Plan



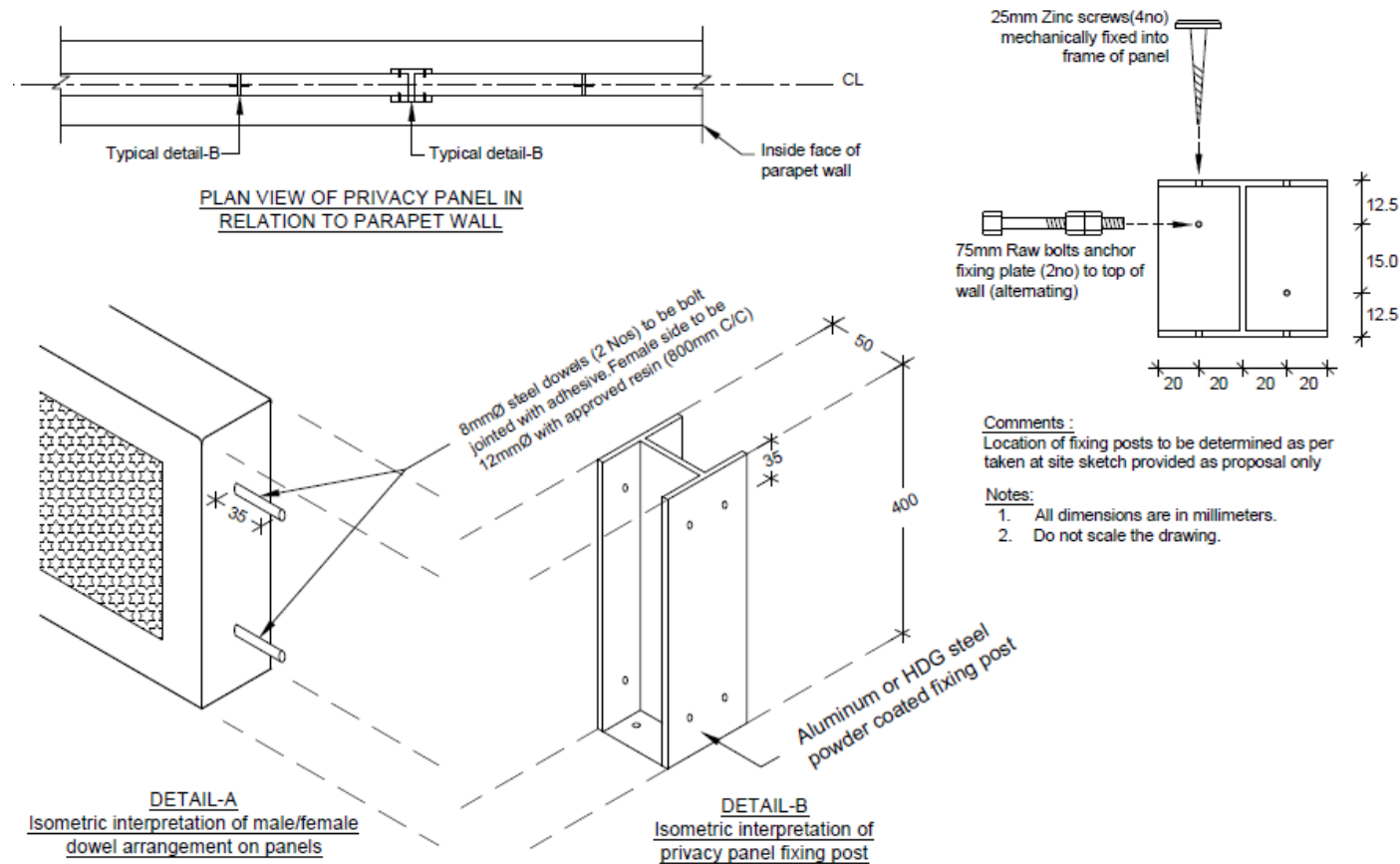
B. Option 01 Aluminium Louvre

Powder coated aluminum louvre sections can be mechanically mounted to top of the parapet wall (See engineers concept below sketch & above A. location layout plan) Louvre sections can be manufactured to increase/decrease visual transparency however final designs are subject to Engineers calculations & recommendations Powder coated sections are available in an array of sizes and RAL colours to meet the requirements in section 1.5. This system is robust, light weight and requires little maintenance. The life expectancy of the Aluminum panel system is in accordance with the 25 year life expectancy of the building.



C. Option 02 GRC Privacy Panel.

Decorative GRC panels sections are mechanically mounted to top of parapet wall (See engineers concept below sketch above A. location layout plan) Panels can manufactured in array of sizes, patters & RAL colours to meet end user requirements (Subject to supplier availability, See extract from supplier Catalogue Att:01) & is visually opaque (Offers full privacy) The panels are inserted & mechanically fixed into Powder coated Aluminum sections which can manufactured in array of RAL colours to meet end user requirements (Subject to supplier availability) This system offers both robustness & aesthetical qualities to the building & requires maintenance every 5 – 10 years (Subject to supplier recommendations for the applied paint). The life expectancy of the GRC system is in accordance with the 25 year life expectancy of the building.



D. Mock Up Photo of Option 01 & 02

